



Certificate of Analysis

CANNABUSINESS LABORATORIES, LLC

Customer:

South Point Hemp
50 Hi Line Dr
Union, MO 63084

Sample ID **240117256**
Order Number **CB240117006**
Sample Name **BBMtblzd2301**

External Sample ID

Batch Number

Product Type **Flower**

Sample Type **Flower**

Received Date **1/22/2024**

COA Released **1/26/2024**

Comments

CANNABINOID PROFILE

Analyte	LOQ (%)	% Dry Weight	mg/g
CBC	0.01	ND	ND
CBD	0.01	0.233	2.333
CBDa	0.01	9.474	94.74
CBDV	0.01	ND	ND
CBG	0.01	0.025	0.253
CBGa	0.01	0.611	6.112
CBN	0.01	ND	ND
d8-THC	0.01	ND	ND
d9-THC	0.01	0.031	0.311
THCa	0.01	0.357	3.570
Total Cannabinoids		10.73	107.3
Total Potential THC		0.344	3.442
Total Potential CBD		8.542	85.42
Total Potential CBG		0.562	5.619

Ratio of Total Potential CBD to Total Potential THC **24.83 : 1**

Ratio of Total Potential CBG to Total Potential THC **1.63 : 1**

*Total Cannabinoids refers to the sum of all cannabinoids detected.

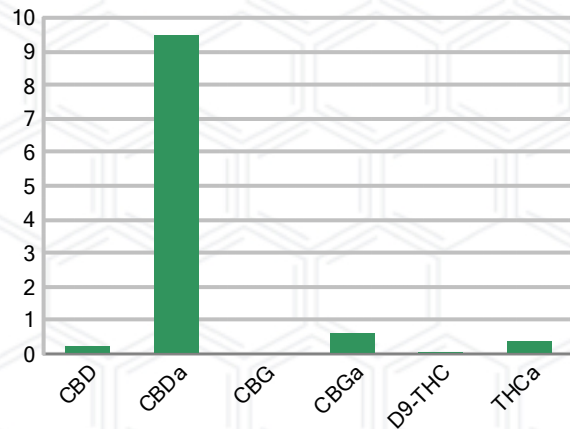
*Total Potential CBD = (0.877 x CBDa) + CBD. *Total Potential THC = (0.877 x THCa) + THC. *Total Potential CBG = (0.877 x CBGa) + CBG.

*Total Potential THC/CBD are calculated to take into account the loss of an acid group during decarboxylation.

SAMPLE IMAGE



CANNABINOIDS % Dry Weight



Shelby Grinnan
Primary Analyst

SIGNATURE

Shelby Grinnan

LABORATORY MANAGER

01/26/2024 4:56 PM

DATE

This product has been tested by CannaBusiness Laboratories using validated testing methodologies and a quality system. Values reported relate only to the product tested. CannaBusiness Laboratories makes no claims as to the efficacy, safety, or other risks associated with any detected or non-detected levels of any compounds reported herein. This Certificate shall not be reproduced except in full, without the written permission of CannaBusiness Laboratories. Photo is of sample received by the lab and may vary from final packaging. The results apply to the sample as received.





Certificate of Analysis

CANNABUSINESS LABORATORIES, LLC

Customer

South Point Hemp
50 Hi Line Dr
Union, MO 63084



Sample Name: BBMtblzd2301

Sample ID: 240117256

Order Number: CB240117006

Product Type: Flower

Sample Type: Flower

Received Date: 01/22/2024

Batch Number:

COA released: 01/26/2024 4:56 PM

Potency (mg/g) Dry Weight

Date Tested: 01/24/2024		Method: CB-SOP-028	
Instrument:			
0.344 %	8.542 %	10.73 %	107.3 mg/g
Total THC	Total CBD	Total Cannabinoids	Total Cannabinoids

Analyte	Result	Units	LOQ	Result	Units
CBC (Cannabichromene)	ND	%	0.010	ND	mg/g
CBD (Cannabidiol)	0.233	%	0.010	2.333	mg/g
CBDa (Cannabidiolic Acid)	9.474	%	0.010	94.74	mg/g
CBDV (Cannabidivarin)	ND	%	0.010	ND	mg/g
CBG (Cannabigerol)	0.025	%	0.010	0.253	mg/g
CBGa (Cannabigerolic Acid)	0.611	%	0.010	6.112	mg/g
CBN (Cannabinol)	ND	%	0.010	ND	mg/g
D8-THC (D8-Tetrahydrocannabinol)	ND	%	0.010	ND	mg/g
D9-THC (D9-Tetrahydrocannabinol)	0.031	%	0.010	0.311	mg/g
THCa (Tetrahydrocannabinolic Acid)	0.357	%	0.010	3.570	mg/g

Potency (mg/g) Dry Weight

Date Tested: 01/24/2024		Method: CB-SOP-028		Instrument:	
-------------------------	--	--------------------	--	-------------	--

Analyte	Result	Units	LOQ	Result	Analyte	Result	Units	LOQ	Result
Percent Moisture	8	%	0.010						



Shelby Grinnan
Primary Analyst

Shelby Grinnan

01/26/2024 4:57 PM

SIGNATURE

DATE

NT = Not tested, ND = Not detected; LOQ = Limit of Quantitation; <LOQ = Detected; >ULOL = Above upper limit of linearity; CFU/g = Colony forming units per 1 gram; TNTC = Too numerous to count

This product has been tested by CannaBusiness Laboratories using validated testing methodologies and a quality system. Values reported relate only to the product tested. CannaBusiness Laboratories makes no claims as to the efficacy, safety, or other risks associated with any detected or non-detected levels of any compounds reported herein. This Certificate shall not be reproduced except in full, without the written permission of CannaBusiness Laboratories. Photo is of sample received by the lab and may vary from final packaging. The results apply to the sample as received.